



PER ANNUM

£34,500 Per Annum

Limeharbour

London, E14 9TS

Full Description

The unit is spread over 3 levels with bathroom and kitchen facilities.

Approx 1300 sqf

Location

Located just off Limeharbour and Millwall Inner Dock with South Quay DLR just a few moments walk as well as a short walk to Canary Wharf.

Terms

5 year lease

Viewing

By appointment only

VAT

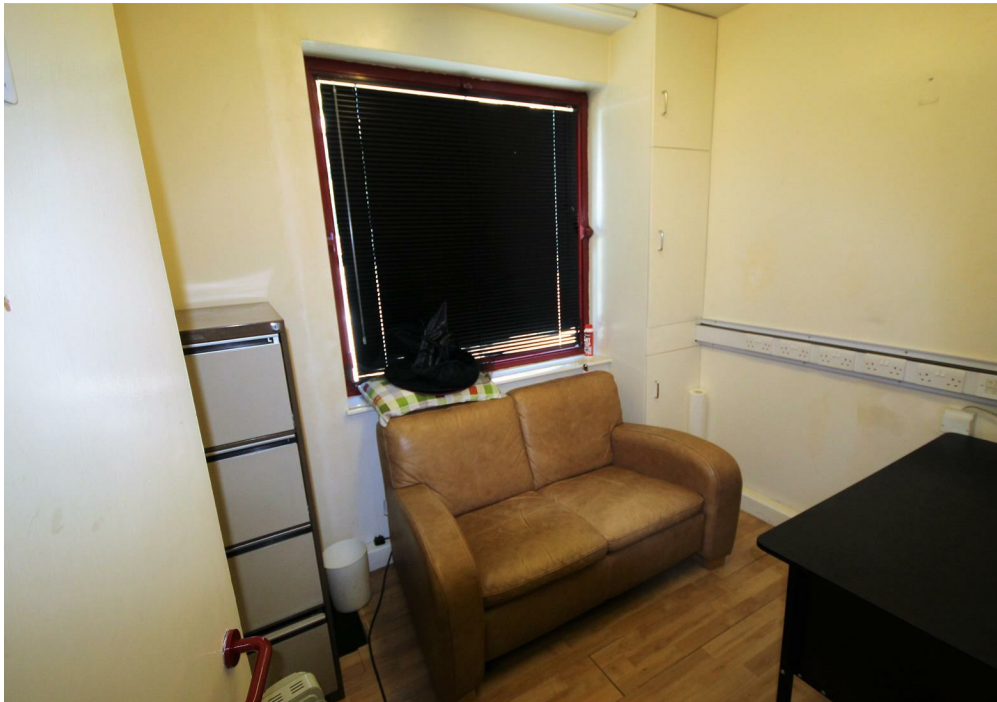
no VAT is payable on the rent.

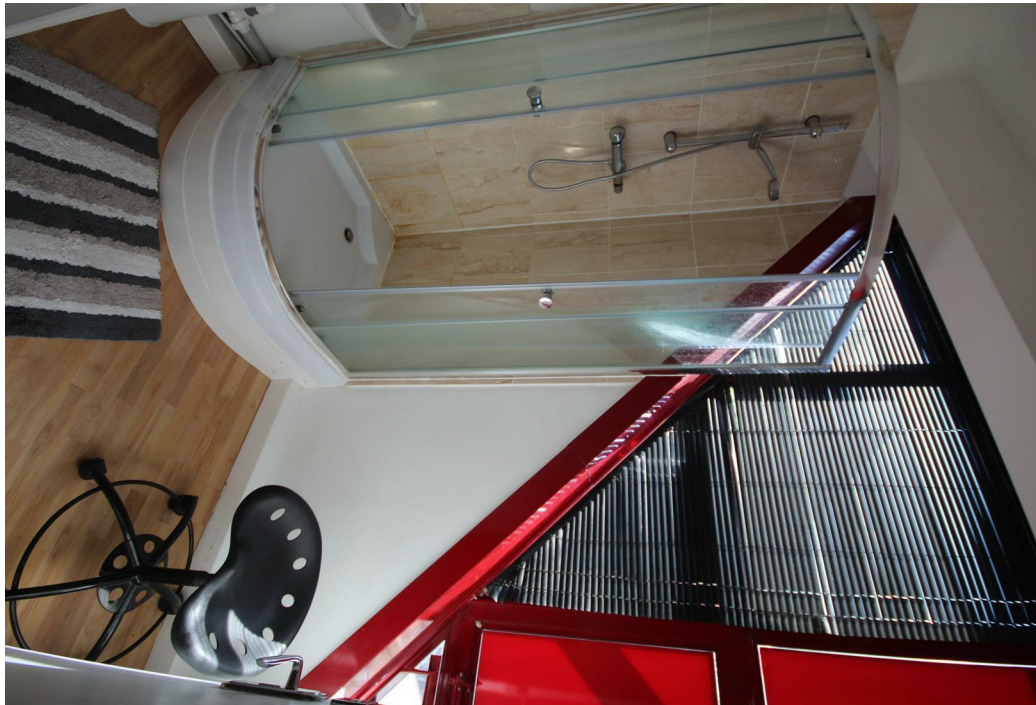
Legal Costs


Each party to cover their own legal costs

Parking Notes

Some units come with allocated parking





Energy Efficiency Rating		
	Current	Potential
<i>Very energy efficient - lower running costs</i>		
(92 plus) A		
(81-91) B		
(69-80) C		
(55-68) D		
(39-54) E		
(21-38) F		
(1-20) G		
<i>Not energy efficient - higher running costs</i>		
England & Wales	EU Directive 2002/91/EC	

Agents Note: Whilst every care has been taken to prepare these particulars, they are for guidance purposes only. All measurements are approximate and are for general guidance purposes only and whilst every care has been taken to ensure their accuracy, they should not be relied upon and potential buyers/tenants are advised to recheck the measurements

OFFICE ADDRESS
88 Cheshire Street
London
E2 6EH

OFFICE DETAILS
0207 739 6969
info@peachproperties.com
www.peachproperties.com